

LASERIS 1 & 2



Context

As part of the territorial and economic development project based around the Megajoule Laser (the world's largest laser, which will go live in 2014), the local initiative Route des Lasers recently announced the creation of 3 new business parks: LASERIS 1 will be home to companies working in the laser optics and plasma sectors, and researchers in this field, as part of the Laser and Plasma Institute. LASERIS 2 will be devoted to tertiary industries related to these sectors, with the new Photonics Hub closer to the University campus rounding off this new trio of business zones.

The Photonics Hub located on the campus of Bordeaux University will complement these facilities. This strong provision of physical resources located within major research hubs will confirm the status of Gironde (and, more broadly, Aquitaine), as France's leading centre of laser-optics technology.

Location

Both science and technology parks are located near the town of Le Barp, not far from the MJL and CEA-CESTA.

Partners

Project Leader: Route des Lasers

Financial partners: local and regional authorities and other key players form the public and private sectors.

Objectives

With the launch of the Megajoule Laser (MJL), the Laser Integration Line (LIL) and the Petawatt Laser (PETAL) near Le Barp, Aquitaine will boast not only the scientific research facilities but also the dedicated business facilities to attract companies to the region.

LASERIS is already home to 26 companies and 210 employees.

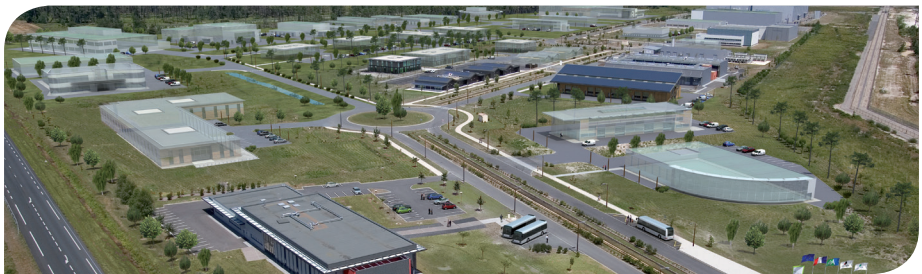
The LASERIS 1 Science and Technology Park, with a surface area of 20 ha, is already home to key industrial support businesses such as THALES-GERAC / ALSYOM / QUANTEL / CILAS / CLEMESSY / SPIE / COFELY / INEO / CEGELEC as well as the Laser and Plasma Institute.

The Route des Lasers agency offers a dedicated Business Centre, with offices and studios available to rent. Route des Lasers can also offer a range of related services, including a shared restaurant, meeting space and a high-speed internet connection.

An 18-hectare extension has just been completed, with most of this land to be sold to businesses.

Route des Lasers has also begun work on a second business park - LASERIS 2, also located near Le Barp. This park will be reserved for relevant tertiary activities, providing first class facilities for researchers, industrial partners and other professionals drawn from all around the world, as well as businesses providing support services.

Initial work on this 7.3 Ha site has now been completed. Projects already launched include hotels, a restaurant, a day care centres and a dedicated centre for service industries, companies and their employees.



Contacts

SEML Route des Lasers

Cité de la Photonique – Unitec

Bâtiment PLEIONE

11 avenue de Canteranne 33600 PESSAC

Tél. : 05 56 93 25 82 – Fax : 05 56 93 02 68

www.seml.route-des-lasers.fr